

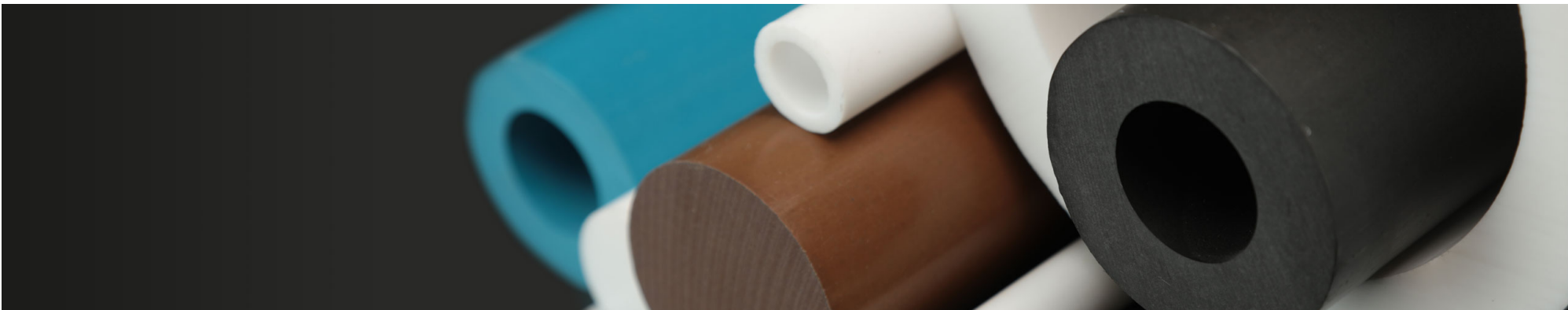
MCP ENGINEERING PALLET RACKING AND



BACKGROUND

MCP Engineering Plastics was founded in 2004 and is one of the leading suppliers of high performance semi-finished and machined components in the UK. They have the machinery, knowledge and experience to manufacture and supply both standard and bespoke solutions in engineering plastics for their customers. In 2018 they obtained the ISO 9001:2015 accreditation.

In June 2024 STS were appointed by MCP to provide new pallet racking, a mezzanine floor and a ground floor office for their new warehouse located in Bishops Stortford



CHALLENGE

Director Jason Lee tasked STS to design a specific Pallet Racking System, pick and bulk storage – similar to the existing storage facility based in Matching Green, for storage of heavy hand loaded formed plastic products, bulk materials and pallets within their new 11,100 sq. ft warehouse facility in Bishops Stortford.

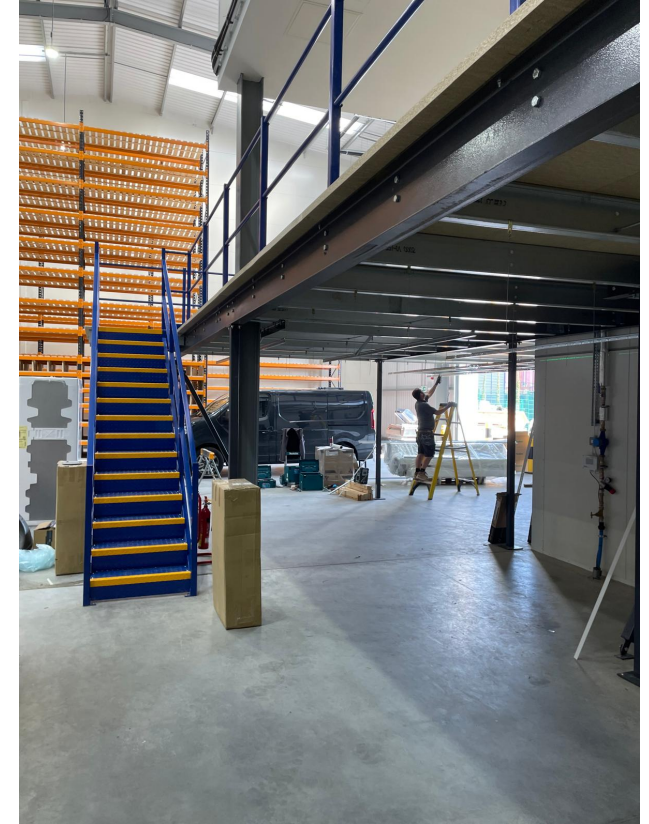
The new warehouse was much higher (10-12m), so we focused on using the height to maximise the storage capacity in the designated fork truck area.

We were also tasked with designing a ground floor warehouse office with mezzanine floor above – under the existing Civil Mezzanine.



THE SOLUTION

- 8550mm x 1100mm Pallet Racking Bays
- 2925/3300 & 2700mm wide pallet racking bays
- 300mm x 340/265mm x 2400mm Pigeon Hole Compartments for storage of long formed plastic products.
- Pallet Storage Above for 500-1000kgs pallets of varying sizes.
- 49.3m² Mezzanine Floor
- 2700mm Finish Floor
- Slimline Design to maximum clear heights available under existing civil mezzanine
- Single Flight 800mm wide tread Staircase with top landing
- Fire Protection (600x600 Suspended Ceiling, Column Casings and Fascia)
- Ground Floor Double Skin Steel Partitioning for warehouse office.



HOW WE DID IT

- Heavy Duty Link 51 XL Pallet Racking, with open boarded timber decking for pallet storage with ground floor accessible chipboard pigeon holes underneath and chipboard shelves for hand picked plastic items
- Pallet Racking designed for future levels to maximise the height available
- Mezzanine Floor designed for 4.8knm2 loading
- Mezzanine fitted with single utility staircase and inset swing pallet gate for fork truck access for the storage of pallets on the mezzanine.
- Ground Floor Warehouse Office -Manufactured from Double Skin Troax Elan Steel Partitioning with glazing fitted with horizontal blinds.
- Steel Partitioning fitted with two lockable doors and finished in White RAL 9010 Powder Coated Paint.



STS
STORAGE SYSTEMS